

①

25 FT. SETBACK ↓

AMUSEMENT COMPANY RIDES

HL

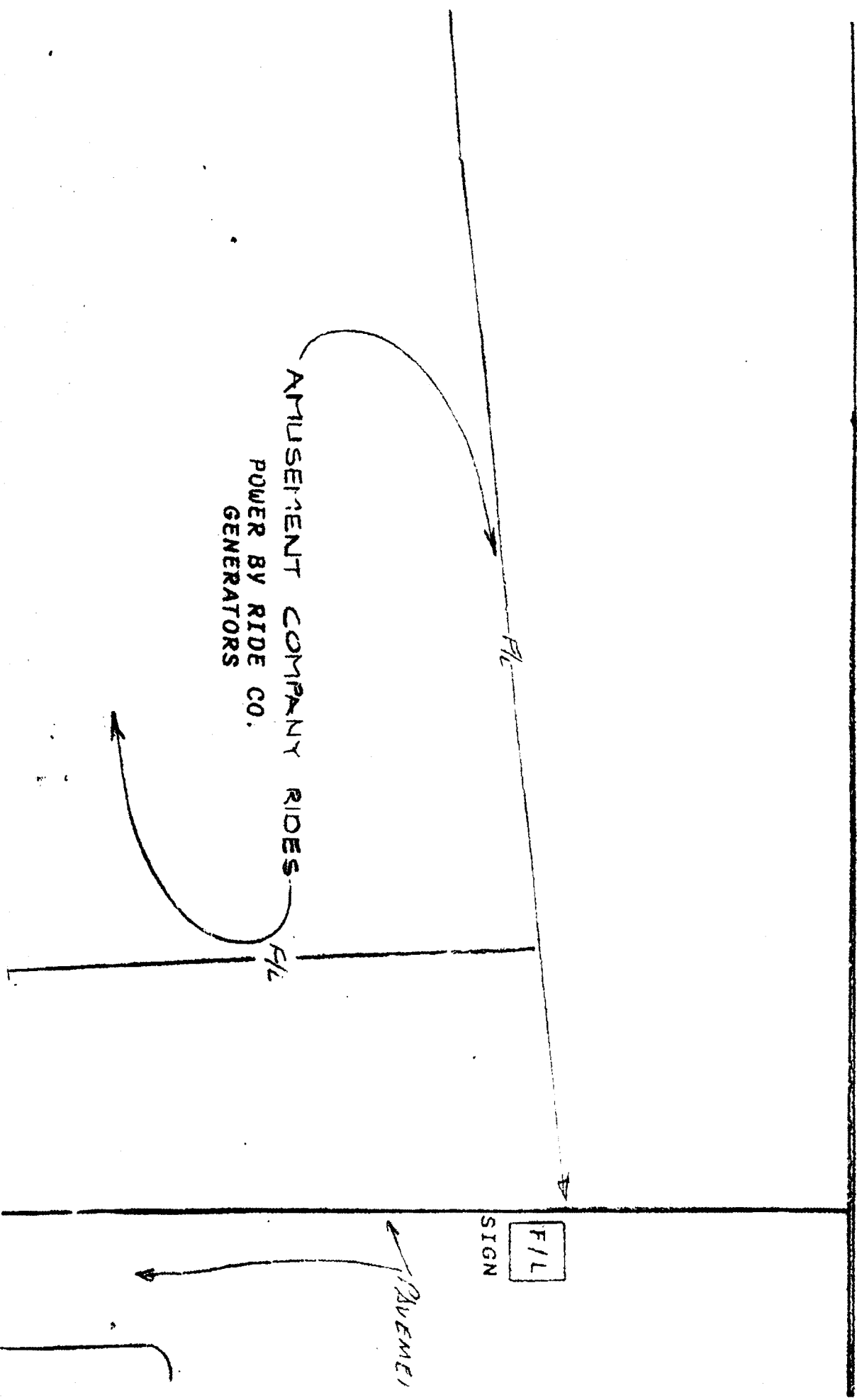
23

LAKE SHORE DRIVE

AMUSEMENT COMPANY RIDES  
POWER BY RIDE CO.  
GENERATORS

F/L  
SIGN

AMUSEMENT



3

EXISTING PARKING AREA  
(500 SPACES)

8 PORTOLETS - G REG.  
2 HANDICAP

ROADWAY

F/L  
SIGN

F/L  
SIGN

# CE COUNTRY FAIR

F/L  
SIGN

(4)

FIRE  
LANE (PAVED ROAD)

F/L

F/L

F/L

F/L

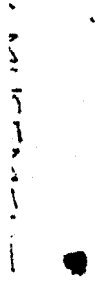
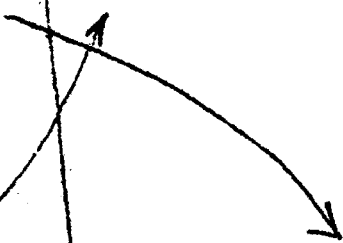
10' x 16'  
BASKET  
BOOTH

4'

RAFFLE  
BOOTH  
10' x 12'

4'

F/L







(13)

AMUSEMENT COMPANY RIDES

POWER BY GENERATORS (BY OTHERS)

\* ALL ELECTRICAL CORDS MUST BE SUFFICIENTLY PROTECTED FROM WATER & CAUSING A TRIP HAZARD. See 9/11/67

10' x 14'  
BASKET Booth  
4'  
4'  
RAFFLE Booth  
10' x 14'

LEGEND AND NOTES:

25 FT SETBACK



I

F/L

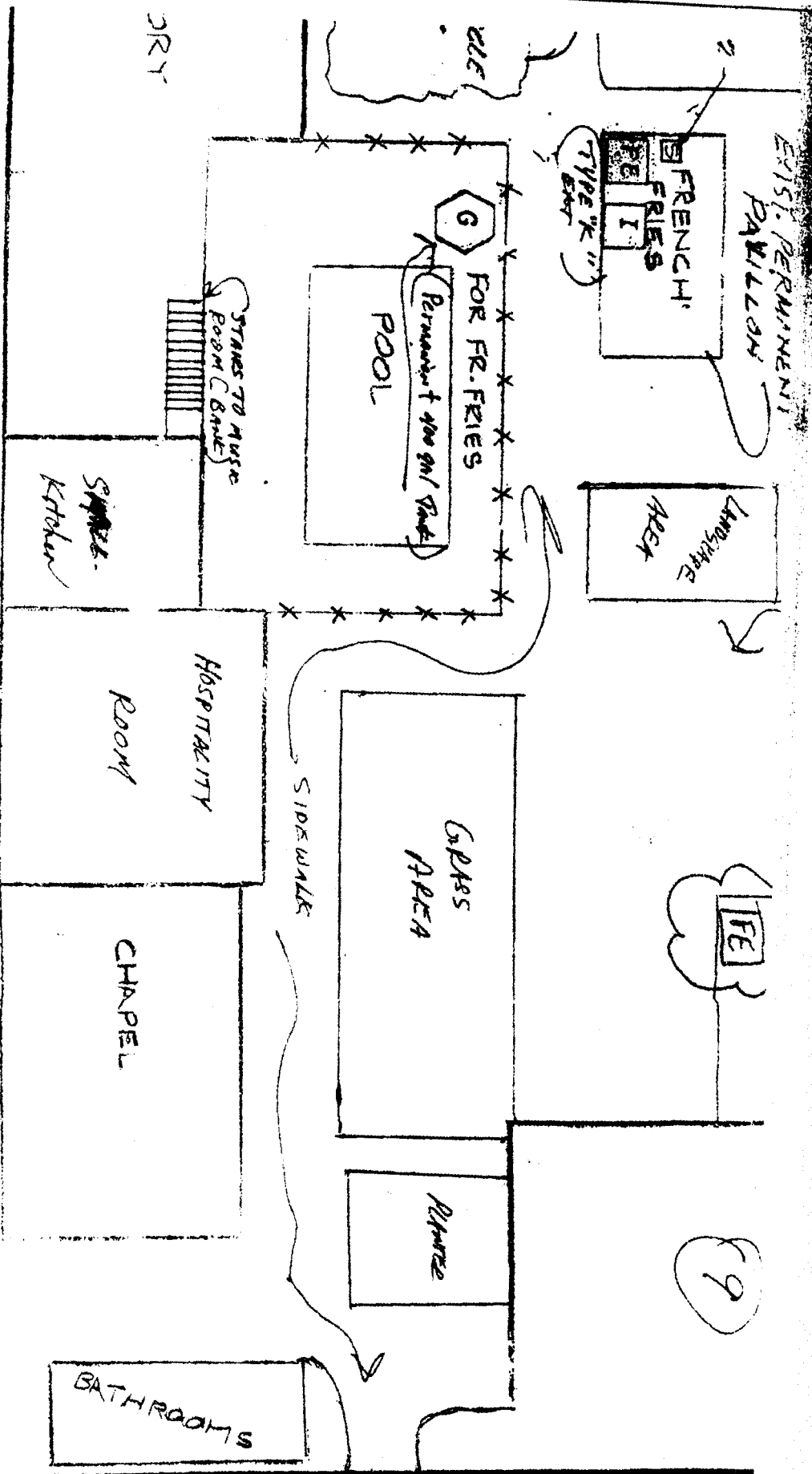
SOURCE OF IGNITION, ALL SOURCES TO BE 10'-0 FIRE LANE- 20FT. MINIMUM WIDTH, NO OBSTRUCT CLEARANCE MINIMUM 16'-0".

5

SINK #1 DISCHARGE TO HOLDING TANK (FOOD & SINK #2 DISCHARGE TO CITY SEWER (F.A.ERY)







SAFETY FENCE

FE

\* NO OVERNIGHT HOUSING ON PREMISES - EXCEPT A FEW RV'S \*

FIRE EXTINGUISHERS REQUIRED AS INDICATED ON PLAN.  
 FIRE EXT. 40 BC DRY CHEMICAL FOR ALL COOKING FACILITIES  
 AND RIDE GENERATORS, 2A20 BC FOR CANOPY AREA, 10 BC DRY  
 CHEMICAL FOR EACH RIDE. ALL FIRE EXTS. MUST BE PROPERLY  
 TAGGED WITH OPERATING SERVICE DATA.

NOTE: NO STREETS TO BE CLOSED

5 # 28 BOOTHMS

draw

design  
 drawr  
 check  
 appro  
 projec  
 scale  
 date